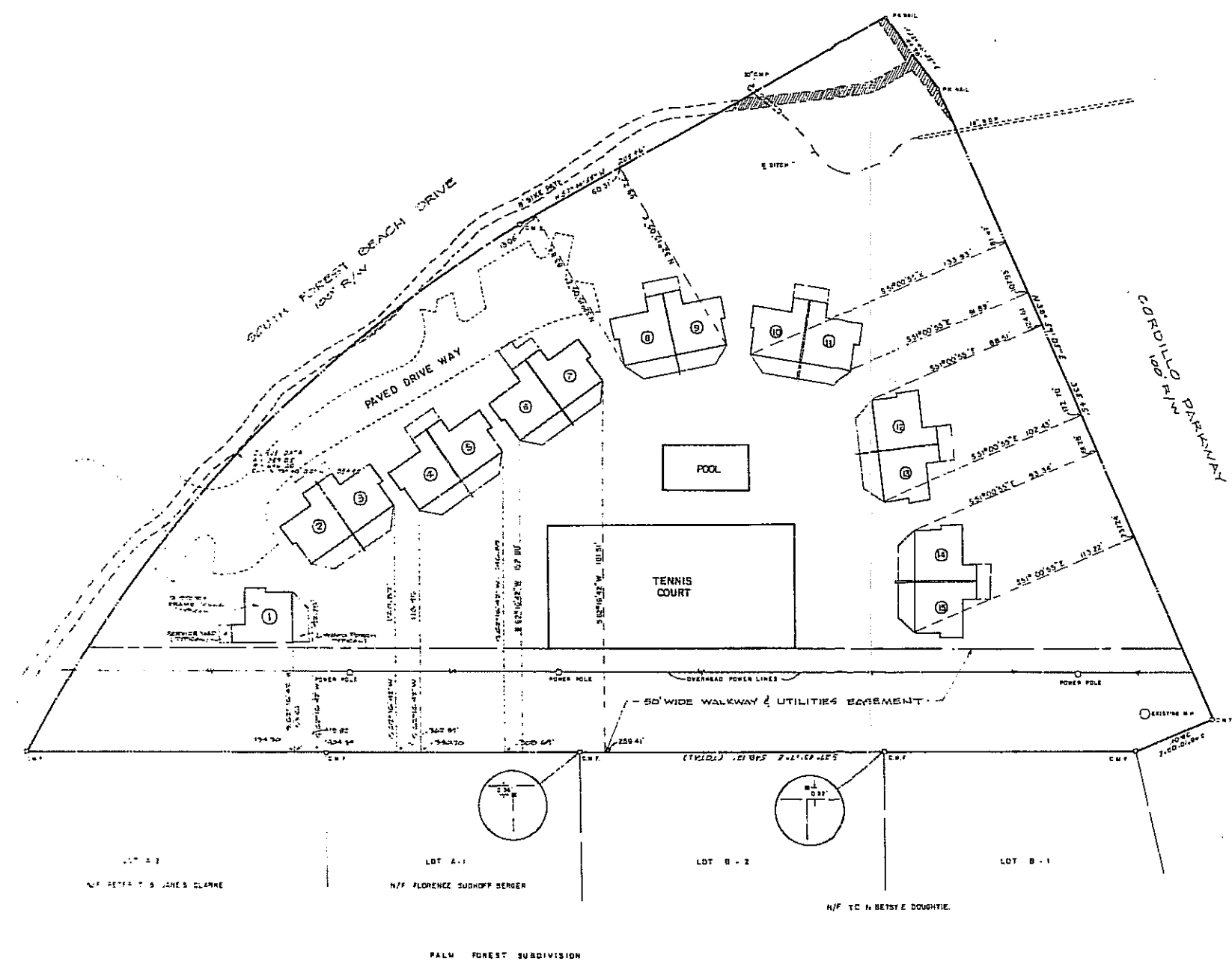


LG. PLAT FILE
PB 29 PG. 106



AREA = 0.619 ACRES

THIS PROPERTY IS LOCATED IN FIA ZONE A-1 (1/3 CO. M.S.L.)

REFERENCE PLAT
PLAT PREPARED FOR BANKERS TRUST OCEAN GATE VILLAS 2.54 ACRES
PARCEL BY FREISELEBEN - YERRES INC DATED 11/78



SEA ISLAND ENGINEERING, INC.
P.O. DRAWER 1568 HILTON HEAD ISLAND, S.C. 29925
CONSULTING ENGINEERS LAND SURVEYORS
SITE PLANNERS

PREPARED FOR
SARATOGA CORPORATION
OCEAN GATE VILLAS
CORDILLO PARKWAY & SOUTH FOREST BEACH DRIVE
HILTON HEAD ISLAND, BEAUFORT COUNTY, S.C.

AS-BUILT SURVEY

DATE: 7/3/81
1-7
SCALE: 1" = 30'