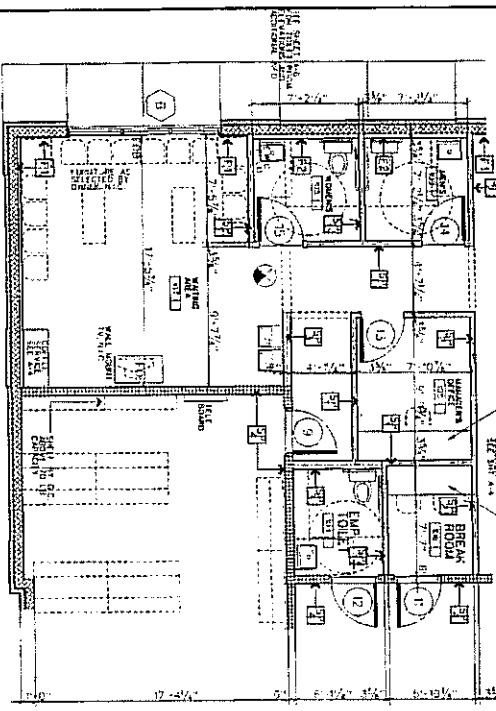
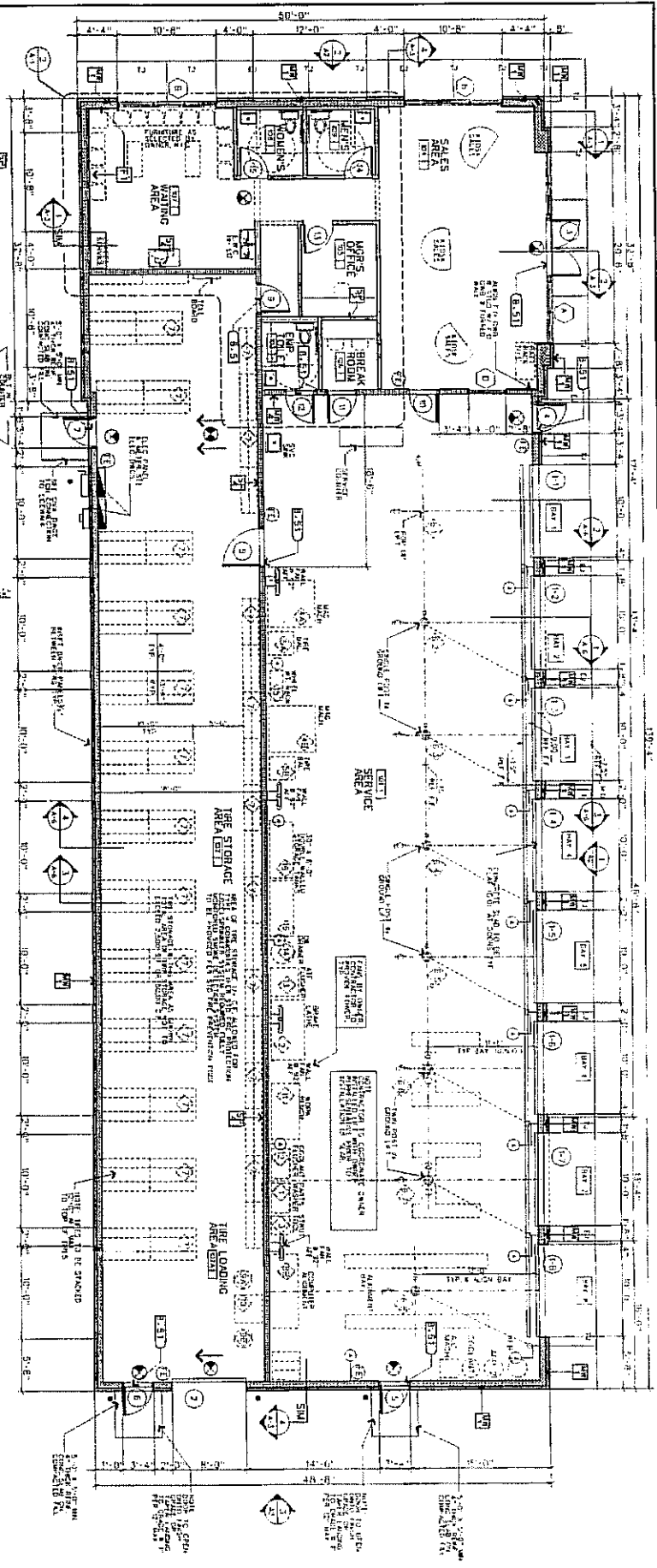


Phase 3A



FLOOR PLAN
SCALE: 1/4" = 1'-0"

1. REFER TO SHEET 1101 FOR FINISHES.
2. REFER TO SHEET 1102 FOR LIGHTING FIXTURES.
3. REFER TO SHEET 1103 FOR MECHANICAL SYSTEMS.
4. REFER TO SHEET 1104 FOR ELECTRICAL SYSTEMS.
5. REFER TO SHEET 1105 FOR STRUCTURAL SYSTEMS.

EQUIPMENT SCHEDULE

NO.	DESCRIPTION	QUANTITY	REMARKS
1	STOVE	1	SEE SHEET 1101
2	SINK	1	SEE SHEET 1101
3	CUPBOARD	1	SEE SHEET 1101
4	STOVE	1	SEE SHEET 1101
5	SINK	1	SEE SHEET 1101
6	CUPBOARD	1	SEE SHEET 1101
7	STOVE	1	SEE SHEET 1101
8	SINK	1	SEE SHEET 1101
9	CUPBOARD	1	SEE SHEET 1101
10	STOVE	1	SEE SHEET 1101
11	SINK	1	SEE SHEET 1101
12	CUPBOARD	1	SEE SHEET 1101
13	STOVE	1	SEE SHEET 1101
14	SINK	1	SEE SHEET 1101
15	CUPBOARD	1	SEE SHEET 1101
16	STOVE	1	SEE SHEET 1101
17	SINK	1	SEE SHEET 1101
18	CUPBOARD	1	SEE SHEET 1101
19	STOVE	1	SEE SHEET 1101
20	SINK	1	SEE SHEET 1101
21	CUPBOARD	1	SEE SHEET 1101
22	STOVE	1	SEE SHEET 1101
23	SINK	1	SEE SHEET 1101
24	CUPBOARD	1	SEE SHEET 1101
25	STOVE	1	SEE SHEET 1101
26	SINK	1	SEE SHEET 1101
27	CUPBOARD	1	SEE SHEET 1101
28	STOVE	1	SEE SHEET 1101
29	SINK	1	SEE SHEET 1101
30	CUPBOARD	1	SEE SHEET 1101

GENERAL NOTES

1. REFER TO SHEET 1101 FOR FINISHES.
2. REFER TO SHEET 1102 FOR LIGHTING FIXTURES.
3. REFER TO SHEET 1103 FOR MECHANICAL SYSTEMS.
4. REFER TO SHEET 1104 FOR ELECTRICAL SYSTEMS.
5. REFER TO SHEET 1105 FOR STRUCTURAL SYSTEMS.

LEGEND

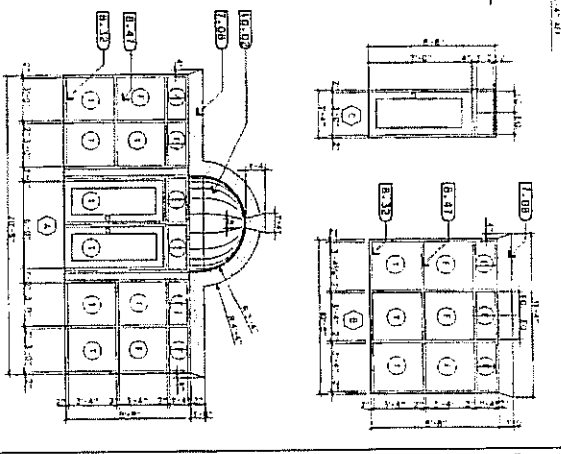
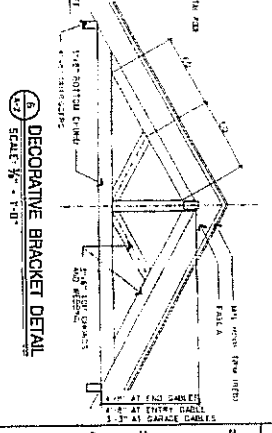
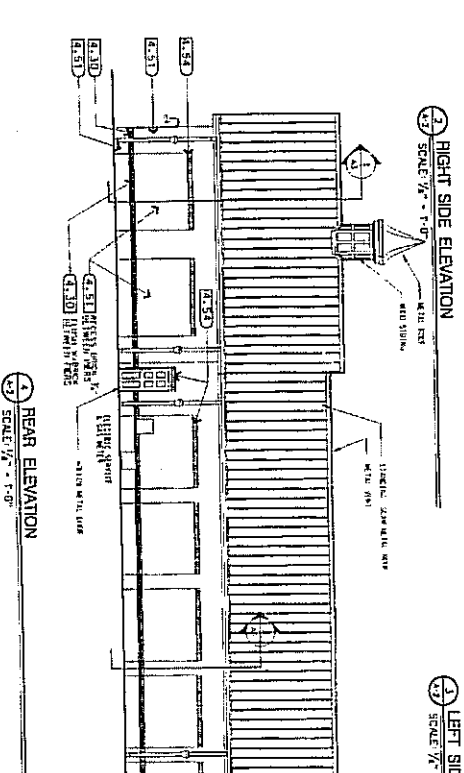
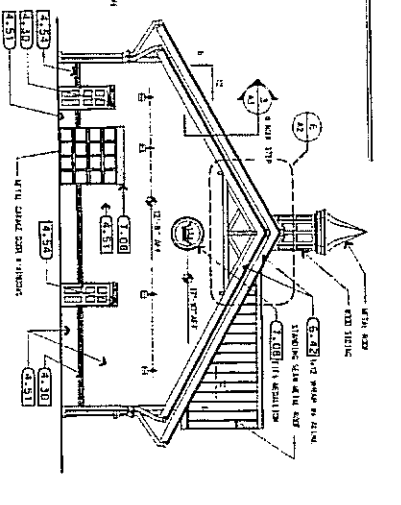
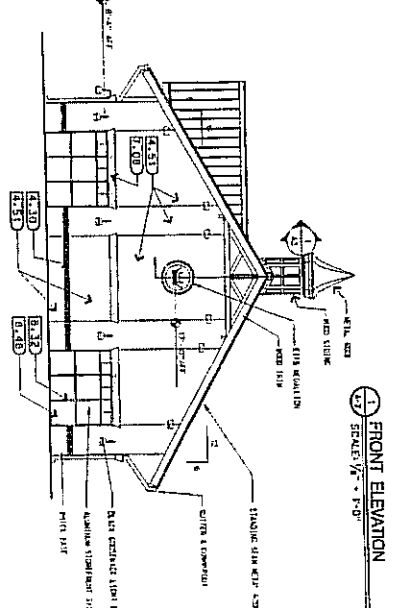
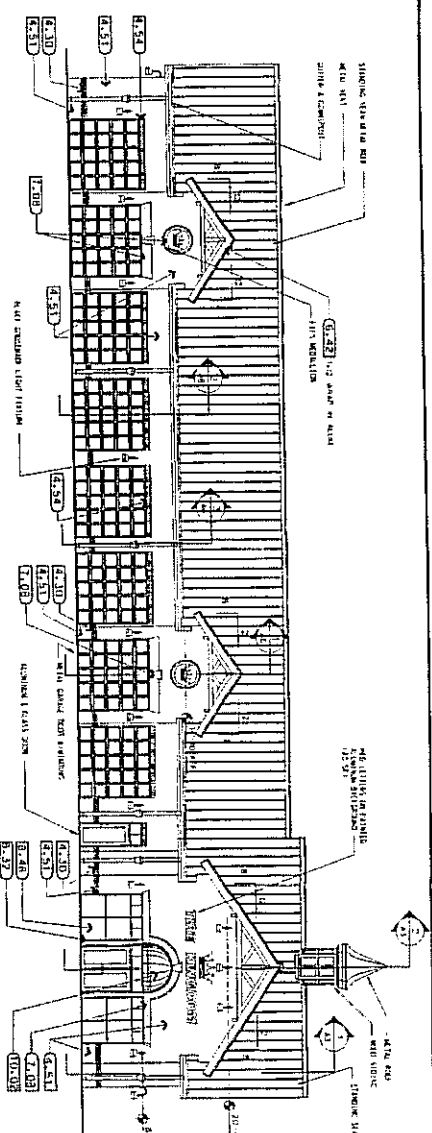
- 1. FIRE EXTINGUISHER
- 2. FIRE ALARM
- 3. FIRE ESCAPE
- 4. FIRE EXIT
- 5. FIRE EXIT DOOR
- 6. FIRE EXIT WINDOW
- 7. FIRE EXIT SIGN
- 8. FIRE EXIT LIGHT
- 9. FIRE EXIT SMOKE DETECTOR
- 10. FIRE EXIT SPRINKLER
- 11. FIRE EXIT SMOKE EXHAUST
- 12. FIRE EXIT SMOKE EXHAUST FAN
- 13. FIRE EXIT SMOKE EXHAUST DUCT
- 14. FIRE EXIT SMOKE EXHAUST TERMINAL
- 15. FIRE EXIT SMOKE EXHAUST CONTROL
- 16. FIRE EXIT SMOKE EXHAUST VALVE
- 17. FIRE EXIT SMOKE EXHAUST DAMPER
- 18. FIRE EXIT SMOKE EXHAUST FILTER
- 19. FIRE EXIT SMOKE EXHAUST CLEANER
- 20. FIRE EXIT SMOKE EXHAUST INSULATION
- 21. FIRE EXIT SMOKE EXHAUST PROTECTIVE COATING
- 22. FIRE EXIT SMOKE EXHAUST PAINT
- 23. FIRE EXIT SMOKE EXHAUST FINISH
- 24. FIRE EXIT SMOKE EXHAUST ACCESSORY
- 25. FIRE EXIT SMOKE EXHAUST PART
- 26. FIRE EXIT SMOKE EXHAUST COMPONENT
- 27. FIRE EXIT SMOKE EXHAUST ASSEMBLY
- 28. FIRE EXIT SMOKE EXHAUST SYSTEM
- 29. FIRE EXIT SMOKE EXHAUST INSTALLATION
- 30. FIRE EXIT SMOKE EXHAUST MAINTENANCE
- 31. FIRE EXIT SMOKE EXHAUST REPAIR
- 32. FIRE EXIT SMOKE EXHAUST REPLACEMENT
- 33. FIRE EXIT SMOKE EXHAUST REMOVAL
- 34. FIRE EXIT SMOKE EXHAUST DISPOSAL
- 35. FIRE EXIT SMOKE EXHAUST STORAGE
- 36. FIRE EXIT SMOKE EXHAUST TRANSPORT
- 37. FIRE EXIT SMOKE EXHAUST HANDLING
- 38. FIRE EXIT SMOKE EXHAUST PROTECTION
- 39. FIRE EXIT SMOKE EXHAUST SAFETY
- 40. FIRE EXIT SMOKE EXHAUST SECURITY
- 41. FIRE EXIT SMOKE EXHAUST COMPLIANCE
- 42. FIRE EXIT SMOKE EXHAUST REGULATION
- 43. FIRE EXIT SMOKE EXHAUST STANDARD
- 44. FIRE EXIT SMOKE EXHAUST CODE
- 45. FIRE EXIT SMOKE EXHAUST REQUIREMENT
- 46. FIRE EXIT SMOKE EXHAUST SPECIFICATION
- 47. FIRE EXIT SMOKE EXHAUST DESCRIPTION
- 48. FIRE EXIT SMOKE EXHAUST IDENTIFICATION
- 49. FIRE EXIT SMOKE EXHAUST LABELING
- 50. FIRE EXIT SMOKE EXHAUST MARKING
- 51. FIRE EXIT SMOKE EXHAUST SIGNAGE
- 52. FIRE EXIT SMOKE EXHAUST NOTIFICATION
- 53. FIRE EXIT SMOKE EXHAUST COMMUNICATION
- 54. FIRE EXIT SMOKE EXHAUST COORDINATION
- 55. FIRE EXIT SMOKE EXHAUST COLLABORATION
- 56. FIRE EXIT SMOKE EXHAUST PARTNERSHIP
- 57. FIRE EXIT SMOKE EXHAUST ALLIANCE
- 58. FIRE EXIT SMOKE EXHAUST CONSORTIUM
- 59. FIRE EXIT SMOKE EXHAUST UNION
- 60. FIRE EXIT SMOKE EXHAUST ASSOCIATION
- 61. FIRE EXIT SMOKE EXHAUST SOCIETY
- 62. FIRE EXIT SMOKE EXHAUST CLUB
- 63. FIRE EXIT SMOKE EXHAUST ORGANIZATION
- 64. FIRE EXIT SMOKE EXHAUST INSTITUTION
- 65. FIRE EXIT SMOKE EXHAUST CORPORATION
- 66. FIRE EXIT SMOKE EXHAUST COMPANY
- 67. FIRE EXIT SMOKE EXHAUST ENTERPRISE
- 68. FIRE EXIT SMOKE EXHAUST BUSINESS
- 69. FIRE EXIT SMOKE EXHAUST INDUSTRY
- 70. FIRE EXIT SMOKE EXHAUST SECTOR
- 71. FIRE EXIT SMOKE EXHAUST MARKET
- 72. FIRE EXIT SMOKE EXHAUST ECONOMY
- 73. FIRE EXIT SMOKE EXHAUST SYSTEM
- 74. FIRE EXIT SMOKE EXHAUST FRAMEWORK
- 75. FIRE EXIT SMOKE EXHAUST STRUCTURE
- 76. FIRE EXIT SMOKE EXHAUST FOUNDATION
- 77. FIRE EXIT SMOKE EXHAUST SUPPORT
- 78. FIRE EXIT SMOKE EXHAUST BASE
- 79. FIRE EXIT SMOKE EXHAUST PLATFORM
- 80. FIRE EXIT SMOKE EXHAUST STAGE
- 81. FIRE EXIT SMOKE EXHAUST SCENE
- 82. FIRE EXIT SMOKE EXHAUST SET
- 83. FIRE EXIT SMOKE EXHAUST DESIGN
- 84. FIRE EXIT SMOKE EXHAUST CONCEPT
- 85. FIRE EXIT SMOKE EXHAUST IDEA
- 86. FIRE EXIT SMOKE EXHAUST VISION
- 87. FIRE EXIT SMOKE EXHAUST DREAM
- 88. FIRE EXIT SMOKE EXHAUST HOPE
- 89. FIRE EXIT SMOKE EXHAUST FAITH
- 90. FIRE EXIT SMOKE EXHAUST BELIEF
- 91. FIRE EXIT SMOKE EXHAUST TRUST
- 92. FIRE EXIT SMOKE EXHAUST RESPECT
- 93. FIRE EXIT SMOKE EXHAUST KINDNESS
- 94. FIRE EXIT SMOKE EXHAUST PATIENCE
- 95. FIRE EXIT SMOKE EXHAUST MERCY
- 96. FIRE EXIT SMOKE EXHAUST GRACE
- 97. FIRE EXIT SMOKE EXHAUST GIFT
- 98. FIRE EXIT SMOKE EXHAUST POWER
- 99. FIRE EXIT SMOKE EXHAUST STRENGTH
- 100. FIRE EXIT SMOKE EXHAUST COURAGE

Scale 1/4" = 1'-0"

TIRE KINGDOM
 BLUFFTON, SOUTH CAROLINA
 FOR:
PAVILION DEVELOPMENT CO.
 CHARLOTTE, NORTH CAROLINA

CHILDREY ROBINSON ASSOCIATES ARCHITECTURE
 1512 BOWLWORTH AVENUE
 CHARLOTTE, N.C. 28204
 (704) 370-1000

A-1
 11-25-04
 11-25-04



2 STOREFRONT ELEVATIONS
 SCALE 1/4" = 1'-0"

LEGEND

1	1" HEIGHT F (TYPICAL) FINISH
2	1" HEIGHT F (TYPICAL) FINISH
3	1" HEIGHT F (TYPICAL) FINISH
4	1" HEIGHT F (TYPICAL) FINISH
5	1" HEIGHT F (TYPICAL) FINISH
6	1" HEIGHT F (TYPICAL) FINISH
7	1" HEIGHT F (TYPICAL) FINISH
8	1" HEIGHT F (TYPICAL) FINISH
9	1" HEIGHT F (TYPICAL) FINISH
10	1" HEIGHT F (TYPICAL) FINISH
11	1" HEIGHT F (TYPICAL) FINISH
12	1" HEIGHT F (TYPICAL) FINISH
13	1" HEIGHT F (TYPICAL) FINISH
14	1" HEIGHT F (TYPICAL) FINISH
15	1" HEIGHT F (TYPICAL) FINISH
16	1" HEIGHT F (TYPICAL) FINISH
17	1" HEIGHT F (TYPICAL) FINISH
18	1" HEIGHT F (TYPICAL) FINISH
19	1" HEIGHT F (TYPICAL) FINISH
20	1" HEIGHT F (TYPICAL) FINISH
21	1" HEIGHT F (TYPICAL) FINISH
22	1" HEIGHT F (TYPICAL) FINISH
23	1" HEIGHT F (TYPICAL) FINISH
24	1" HEIGHT F (TYPICAL) FINISH
25	1" HEIGHT F (TYPICAL) FINISH
26	1" HEIGHT F (TYPICAL) FINISH
27	1" HEIGHT F (TYPICAL) FINISH
28	1" HEIGHT F (TYPICAL) FINISH
29	1" HEIGHT F (TYPICAL) FINISH
30	1" HEIGHT F (TYPICAL) FINISH
31	1" HEIGHT F (TYPICAL) FINISH
32	1" HEIGHT F (TYPICAL) FINISH
33	1" HEIGHT F (TYPICAL) FINISH
34	1" HEIGHT F (TYPICAL) FINISH
35	1" HEIGHT F (TYPICAL) FINISH
36	1" HEIGHT F (TYPICAL) FINISH
37	1" HEIGHT F (TYPICAL) FINISH
38	1" HEIGHT F (TYPICAL) FINISH
39	1" HEIGHT F (TYPICAL) FINISH
40	1" HEIGHT F (TYPICAL) FINISH
41	1" HEIGHT F (TYPICAL) FINISH
42	1" HEIGHT F (TYPICAL) FINISH
43	1" HEIGHT F (TYPICAL) FINISH
44	1" HEIGHT F (TYPICAL) FINISH
45	1" HEIGHT F (TYPICAL) FINISH
46	1" HEIGHT F (TYPICAL) FINISH
47	1" HEIGHT F (TYPICAL) FINISH
48	1" HEIGHT F (TYPICAL) FINISH
49	1" HEIGHT F (TYPICAL) FINISH
50	1" HEIGHT F (TYPICAL) FINISH
51	1" HEIGHT F (TYPICAL) FINISH
52	1" HEIGHT F (TYPICAL) FINISH
53	1" HEIGHT F (TYPICAL) FINISH
54	1" HEIGHT F (TYPICAL) FINISH
55	1" HEIGHT F (TYPICAL) FINISH
56	1" HEIGHT F (TYPICAL) FINISH
57	1" HEIGHT F (TYPICAL) FINISH
58	1" HEIGHT F (TYPICAL) FINISH
59	1" HEIGHT F (TYPICAL) FINISH
60	1" HEIGHT F (TYPICAL) FINISH
61	1" HEIGHT F (TYPICAL) FINISH
62	1" HEIGHT F (TYPICAL) FINISH
63	1" HEIGHT F (TYPICAL) FINISH
64	1" HEIGHT F (TYPICAL) FINISH
65	1" HEIGHT F (TYPICAL) FINISH
66	1" HEIGHT F (TYPICAL) FINISH
67	1" HEIGHT F (TYPICAL) FINISH
68	1" HEIGHT F (TYPICAL) FINISH
69	1" HEIGHT F (TYPICAL) FINISH
70	1" HEIGHT F (TYPICAL) FINISH

GENERAL NOTES:

1. ALL DIMENSIONS ARE UNLESS OTHERWISE NOTED.
2. FINISHES TO BE AS SHOWN ON THE DRAWINGS.
3. MATERIALS TO BE AS SHOWN ON THE DRAWINGS.
4. THE CONTRACTOR SHALL BE RESPONSIBLE FOR OBTAINING ALL NECESSARY PERMITS AND APPROVALS FROM THE LOCAL, STATE AND FEDERAL AUTHORITIES.
5. THE CONTRACTOR SHALL BE RESPONSIBLE FOR OBTAINING ALL NECESSARY UTILITIES AND CONNECTIONS.
6. ALL WORK SHALL BE DONE IN ACCORDANCE WITH THE LATEST EDITIONS OF THE BUILDING CODES AND SPECIFICATIONS.
7. THE CONTRACTOR SHALL BE RESPONSIBLE FOR PROTECTING ALL EXISTING UTILITIES AND STRUCTURES.
8. ALL MATERIALS SHALL BE STORED PROPERLY AND PROTECTED FROM WEATHER.
9. THE CONTRACTOR SHALL BE RESPONSIBLE FOR MAINTAINING THE SAFETY OF THE WORK AREA AT ALL TIMES.
10. ALL WORK SHALL BE COMPLETED WITHIN THE SPECIFIED TIME FRAME.
11. THE CONTRACTOR SHALL BE RESPONSIBLE FOR OBTAINING ALL NECESSARY INSURANCE AND BONDING.
12. ALL PAYROLL RECORDS SHALL BE MAINTAINED AND SUBMITTED TO THE OWNER.
13. THE CONTRACTOR SHALL BE RESPONSIBLE FOR OBTAINING ALL NECESSARY SCHEDULING INFORMATION.
14. ALL WORK SHALL BE COMPLETED IN ACCORDANCE WITH THE OWNER'S REQUIREMENTS.
15. THE CONTRACTOR SHALL BE RESPONSIBLE FOR OBTAINING ALL NECESSARY INSPECTION AND APPROVALS.
16. ALL WORK SHALL BE COMPLETED WITHIN THE SPECIFIED TIME FRAME.
17. THE CONTRACTOR SHALL BE RESPONSIBLE FOR OBTAINING ALL NECESSARY SCHEDULING INFORMATION.
18. ALL WORK SHALL BE COMPLETED IN ACCORDANCE WITH THE OWNER'S REQUIREMENTS.
19. THE CONTRACTOR SHALL BE RESPONSIBLE FOR OBTAINING ALL NECESSARY INSPECTION AND APPROVALS.
20. ALL WORK SHALL BE COMPLETED WITHIN THE SPECIFIED TIME FRAME.
21. THE CONTRACTOR SHALL BE RESPONSIBLE FOR OBTAINING ALL NECESSARY SCHEDULING INFORMATION.
22. ALL WORK SHALL BE COMPLETED IN ACCORDANCE WITH THE OWNER'S REQUIREMENTS.
23. THE CONTRACTOR SHALL BE RESPONSIBLE FOR OBTAINING ALL NECESSARY INSPECTION AND APPROVALS.
24. ALL WORK SHALL BE COMPLETED WITHIN THE SPECIFIED TIME FRAME.
25. THE CONTRACTOR SHALL BE RESPONSIBLE FOR OBTAINING ALL NECESSARY SCHEDULING INFORMATION.
26. ALL WORK SHALL BE COMPLETED IN ACCORDANCE WITH THE OWNER'S REQUIREMENTS.
27. THE CONTRACTOR SHALL BE RESPONSIBLE FOR OBTAINING ALL NECESSARY INSPECTION AND APPROVALS.
28. ALL WORK SHALL BE COMPLETED WITHIN THE SPECIFIED TIME FRAME.
29. THE CONTRACTOR SHALL BE RESPONSIBLE FOR OBTAINING ALL NECESSARY SCHEDULING INFORMATION.
30. ALL WORK SHALL BE COMPLETED IN ACCORDANCE WITH THE OWNER'S REQUIREMENTS.
31. THE CONTRACTOR SHALL BE RESPONSIBLE FOR OBTAINING ALL NECESSARY INSPECTION AND APPROVALS.
32. ALL WORK SHALL BE COMPLETED WITHIN THE SPECIFIED TIME FRAME.
33. THE CONTRACTOR SHALL BE RESPONSIBLE FOR OBTAINING ALL NECESSARY SCHEDULING INFORMATION.
34. ALL WORK SHALL BE COMPLETED IN ACCORDANCE WITH THE OWNER'S REQUIREMENTS.
35. THE CONTRACTOR SHALL BE RESPONSIBLE FOR OBTAINING ALL NECESSARY INSPECTION AND APPROVALS.
36. ALL WORK SHALL BE COMPLETED WITHIN THE SPECIFIED TIME FRAME.
37. THE CONTRACTOR SHALL BE RESPONSIBLE FOR OBTAINING ALL NECESSARY SCHEDULING INFORMATION.
38. ALL WORK SHALL BE COMPLETED IN ACCORDANCE WITH THE OWNER'S REQUIREMENTS.
39. THE CONTRACTOR SHALL BE RESPONSIBLE FOR OBTAINING ALL NECESSARY INSPECTION AND APPROVALS.
40. ALL WORK SHALL BE COMPLETED WITHIN THE SPECIFIED TIME FRAME.
41. THE CONTRACTOR SHALL BE RESPONSIBLE FOR OBTAINING ALL NECESSARY SCHEDULING INFORMATION.
42. ALL WORK SHALL BE COMPLETED IN ACCORDANCE WITH THE OWNER'S REQUIREMENTS.
43. THE CONTRACTOR SHALL BE RESPONSIBLE FOR OBTAINING ALL NECESSARY INSPECTION AND APPROVALS.
44. ALL WORK SHALL BE COMPLETED WITHIN THE SPECIFIED TIME FRAME.
45. THE CONTRACTOR SHALL BE RESPONSIBLE FOR OBTAINING ALL NECESSARY SCHEDULING INFORMATION.
46. ALL WORK SHALL BE COMPLETED IN ACCORDANCE WITH THE OWNER'S REQUIREMENTS.
47. THE CONTRACTOR SHALL BE RESPONSIBLE FOR OBTAINING ALL NECESSARY INSPECTION AND APPROVALS.
48. ALL WORK SHALL BE COMPLETED WITHIN THE SPECIFIED TIME FRAME.
49. THE CONTRACTOR SHALL BE RESPONSIBLE FOR OBTAINING ALL NECESSARY SCHEDULING INFORMATION.
50. ALL WORK SHALL BE COMPLETED IN ACCORDANCE WITH THE OWNER'S REQUIREMENTS.
51. THE CONTRACTOR SHALL BE RESPONSIBLE FOR OBTAINING ALL NECESSARY INSPECTION AND APPROVALS.
52. ALL WORK SHALL BE COMPLETED WITHIN THE SPECIFIED TIME FRAME.
53. THE CONTRACTOR SHALL BE RESPONSIBLE FOR OBTAINING ALL NECESSARY SCHEDULING INFORMATION.
54. ALL WORK SHALL BE COMPLETED IN ACCORDANCE WITH THE OWNER'S REQUIREMENTS.
55. THE CONTRACTOR SHALL BE RESPONSIBLE FOR OBTAINING ALL NECESSARY INSPECTION AND APPROVALS.
56. ALL WORK SHALL BE COMPLETED WITHIN THE SPECIFIED TIME FRAME.
57. THE CONTRACTOR SHALL BE RESPONSIBLE FOR OBTAINING ALL NECESSARY SCHEDULING INFORMATION.
58. ALL WORK SHALL BE COMPLETED IN ACCORDANCE WITH THE OWNER'S REQUIREMENTS.
59. THE CONTRACTOR SHALL BE RESPONSIBLE FOR OBTAINING ALL NECESSARY INSPECTION AND APPROVALS.
60. ALL WORK SHALL BE COMPLETED WITHIN THE SPECIFIED TIME FRAME.
61. THE CONTRACTOR SHALL BE RESPONSIBLE FOR OBTAINING ALL NECESSARY SCHEDULING INFORMATION.
62. ALL WORK SHALL BE COMPLETED IN ACCORDANCE WITH THE OWNER'S REQUIREMENTS.
63. THE CONTRACTOR SHALL BE RESPONSIBLE FOR OBTAINING ALL NECESSARY INSPECTION AND APPROVALS.
64. ALL WORK SHALL BE COMPLETED WITHIN THE SPECIFIED TIME FRAME.
65. THE CONTRACTOR SHALL BE RESPONSIBLE FOR OBTAINING ALL NECESSARY SCHEDULING INFORMATION.
66. ALL WORK SHALL BE COMPLETED IN ACCORDANCE WITH THE OWNER'S REQUIREMENTS.
67. THE CONTRACTOR SHALL BE RESPONSIBLE FOR OBTAINING ALL NECESSARY INSPECTION AND APPROVALS.
68. ALL WORK SHALL BE COMPLETED WITHIN THE SPECIFIED TIME FRAME.
69. THE CONTRACTOR SHALL BE RESPONSIBLE FOR OBTAINING ALL NECESSARY SCHEDULING INFORMATION.
70. ALL WORK SHALL BE COMPLETED IN ACCORDANCE WITH THE OWNER'S REQUIREMENTS.

Establish in Standard Architectural in Bluffton
 Drawn by The URS Group, Inc. (Bluffton) Project
 Modified 10/1/03, 11/1/03, 12/1/03, 1/1/04

	TIRE KINGDOM BLUFFTON, SOUTH CAROLINA FOR: PAVILION DEVELOPMENT CO. CHARLOTTE, NORTH CAROLINA	 CHILDREY ROBINSON ASSOCIATES ARCHITECTURE <small>1515 DUNN CROWN AVENUE CHARLOTTE, N.C. 28204 (704) 375-4000</small>
	<p>Scale: 1/4" = 1'-0"</p> <p>Sheet: A-2</p>	